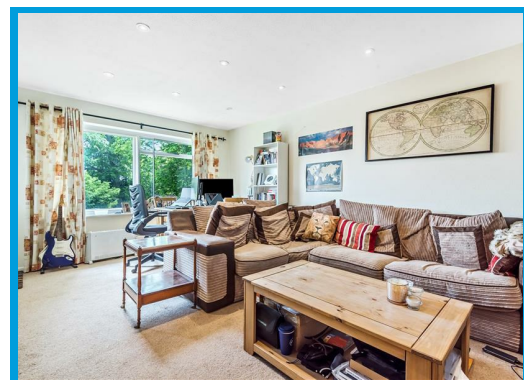
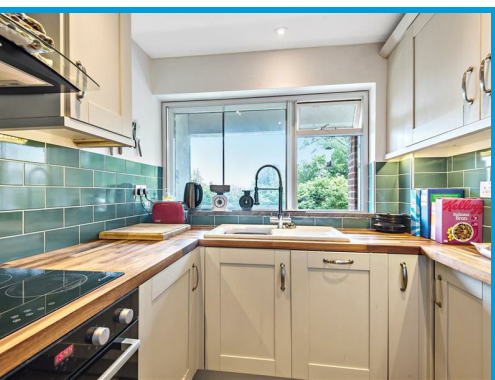




Melville Court, Guildown Road Guildford, Surrey GU2 4ER

£1,375 PCM

Located in a sought after town centre location only moments walk to Guildford mainline station, this spacious and well presented apartment is positioned within a popular development and features a balcony and parking.



Description

This stunning one double bedroom top floor apartment offers spacious and light accommodation throughout and is located in a popular leafy residential area only moments from Guildford High Street and mainline station.

The property comprises hallway with access to the double bedroom with built in wardrobes, modern bathroom suite, large L shape reception room, kitchen with appliances and private balcony with views overlooking Guildford Chantryes.

The property further features a balcony and off street parking.

